

***Expansion Joints: Metal, Rubber, Fabric,  
& Braided Hose Connectors***



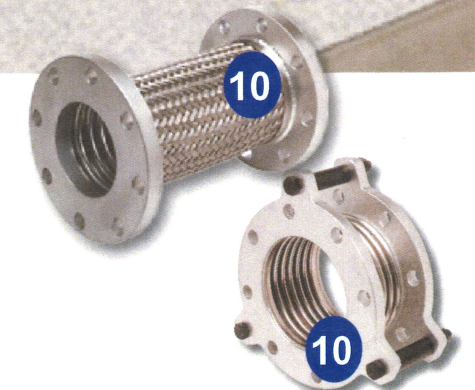
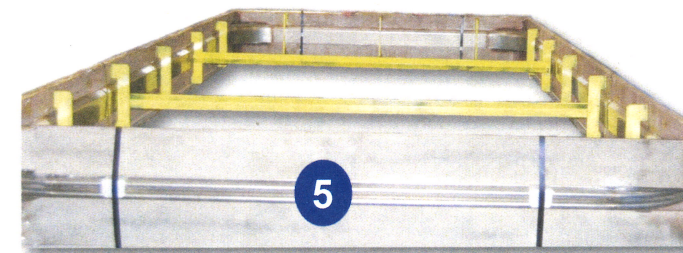
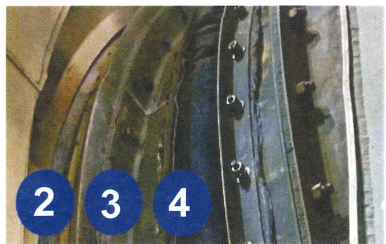
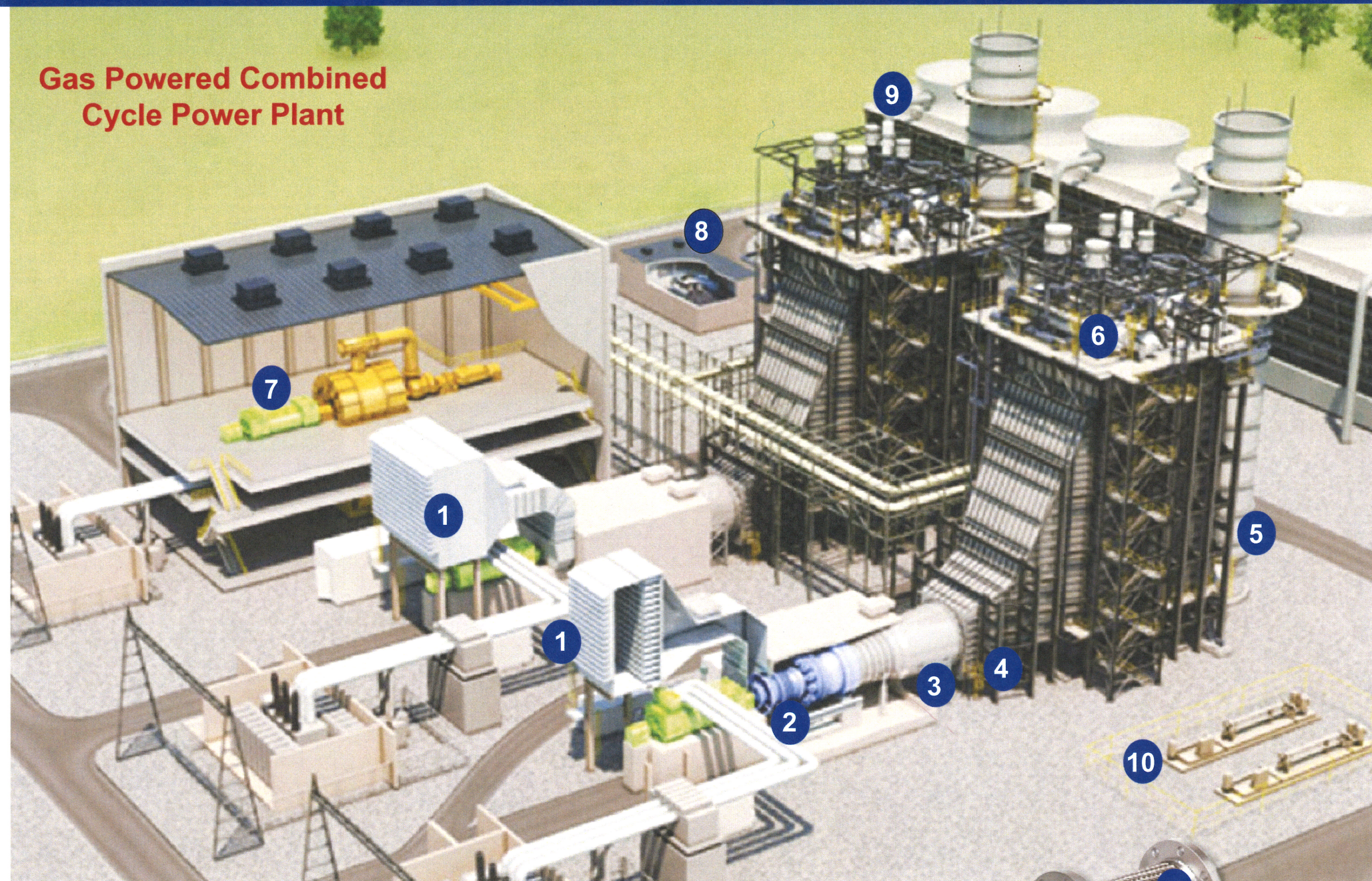


Energy production requires safe and reliable operation at high temperatures, pressures, and flow velocities. A high-stress, dynamic environment exists in various pipe and duct systems, often with vibration. Dependability of the many expansion joints and connectors is paramount. Support for planned outages and unexpected situations is critical. Hyspan has extensive engineering and manufacturing experience of expansion joints in Combined Cycle, Geothermal, Nuclear, Concentrated Solar Power, and other plant types.

**Application Index:**

1. Air Intake – Fabric
2. Gas Turbine Inlet – Fabric or Metal
3. Gas Turbine Exhaust – Fabric or Metal
4. HRSG Inlet – Fabric or Metal
5. HRSG Exhaust Stack – Fabric or Metal
6. HRSG Penetration Seals/Clamshell: Fabric, Metal
7. Steam Turbine Crossover – Metal
8. Condenser Inlet – Metal or Rubber Dog Bone (not shown)
9. Cooling Tower – Rubber
10. Pumps – Metal, Rubber, Metal Hose

**Gas Powered Combined Cycle Power Plant**





# Power Generation Solutions

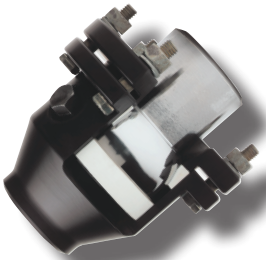
Performance, Reliability, Safety



*Perma-Pax Slip Joints*



*Externally Pressurized Bellows*



*Hyspan-Barco Ball Joints*



Hyspan has supported the Power Industry for 50+ years.

Our design, manufacturing capabilities, and field emergency services have earned us a distinguished reputation in the field.

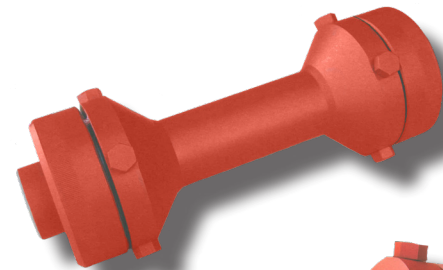


*Solar Mirror Collectors*

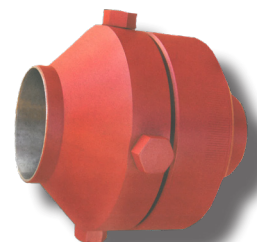


*Double Solar Ball Joints*

**THE HYSPAN GROUP includes:**



*Single Solar Ball Joint*



www.hyspan.com  
websales@hyspan.com  
+1 619-421-1355