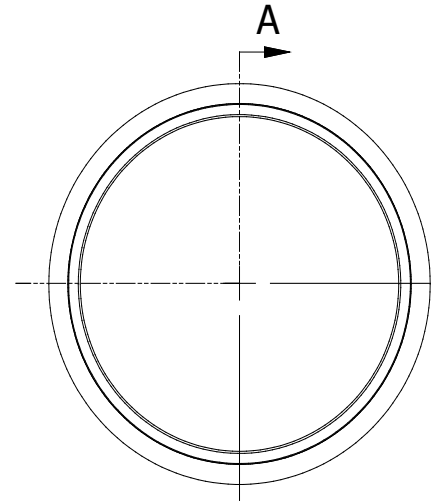
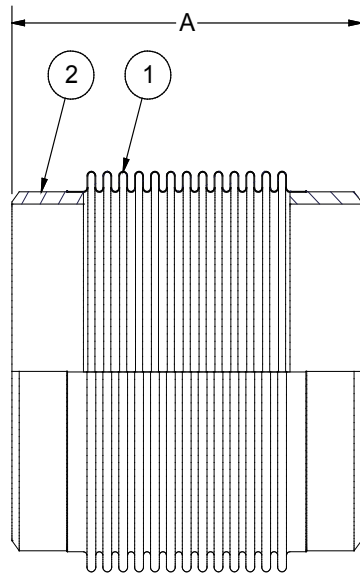


BUTTWELD ENDS
 ASME B16.25
 1/16" LAND, 37.5° BEVEL



SEE SHEET 3 FOR NOTES

SUBMITTED FOR APPROVAL	DESIGN DATA	LIST OF MATERIAL			
	MEDIA:				
	OPERATING PRESSURE: PSIG				
	DESIGN PRESSURE: 50 PSIG				
	DESIGN TEMPERATURE: 500° F				
		2	2	PIPE, SCHEDULE STANDARD	A53 GRADE B
		1	1	BELLOWS	A240-304
		ITEM	QTY	DESCRIPTION	MATERIAL

**1509 HYFLEX SINGLE-PLY
 WELD END, 50 PSIG**



Hyspan Precision Products, Inc. Tel 619-421-1355
 1685 Brandywine Avenue Fax 619-421-1702
 Chula Vista, CA 91911 websales@hyspan.com

ITEM	PART NUMBER	NOMINAL SIZE (IN)	QUANTITY	AXIAL COMPRESSION (IN)	OVERALL LENGTH A (IN)	WEIGHT (LB)	TAG
	1509-040-1.5	3		1.5	8.0	4	
	1509-040-2.0	3		2.0	9.0	4	
	1509-040-2.5	3		2.5	10.0	4	
	1509-048-1.5	4		1.5	8.0	6	
	1509-048-2.0	4		2.0	9.0	6	
	1509-048-2.5	4		2.5	10.0	6	
	1509-055-1.5	5		1.5	8.0	8	
	1509-055-2.0	5		2.0	9.0	8	
	1509-055-2.5	5		2.5	10.0	8	
	1509-060-1.5	6		1.5	8.0	10	
	1509-060-2.0	6		2.0	9.0	10	
	1509-060-2.5	6		2.5	10.0	10	
	1509-067-2.0	8		2.0	9.0	15	
	1509-067-2.5	8		2.5	11.0	15	
	1509-067-3.0	8		3.0	11.5	15	
	1509-074-2.0	10		2.0	9.0	21	
	1509-074-2.5	10		2.5	11.0	21	
	1509-074-3.0	10		3.0	11.5	21	
	1509-080-2.0	12		2.0	9.0	25	
	1509-080-2.5	12		2.5	11.0	25	
	1509-080-3.0	12		3.0	11.5	25	
	1509-081-2.0	14		2.0	10.0	28	
	1509-081-3.0	14		3.0	12.0	28	
	1509-081-3.5	14		3.5	12.5	28	

Nominal Sizes 16", 18", 20", and 24" on Sheet 3 of 3

**1509 HYFLEX SINGLE-PLY
WELD END, 50 PSIG**



Hyspan Precision Products, Inc. Tel 619-421-1355
1685 Brandywine Avenue Fax 619-421-1702
Chula Vista, CA 91911 websales@hyspan.com

ITEM	PART NUMBER	NOMINAL SIZE (IN)	QUANTITY	AXIAL COMPRESSION (IN)	OVERALL LENGTH A (IN)	WEIGHT (LB)	TAG
	1509-082-2.0	16		2.0	10.0	32	
	1509-082-3.0	16		3.0	12.0	32	
	1509-082-3.5	16		3.5	12.5	32	
	1509-083-2.0	18		2.0	10.0	36	
	1509-083-3.0	18		3.0	12.0	36	
	1509-083-3.5	18		3.5	12.5	36	
	1509-084-2.0	20		2.0	12.0	40	
	1509-084-3.0	20		3.0	14.5	40	
	1509-084-4.0	20		4.0	17.0	40	
	1509-086-2.0	24		2.0	12.0	48	
	1509-086-3.0	24		3.0	14.5	48	
	1509-086-4.0	24		4.0	17.0	48	

NOTES:

1. MANUFACTURED BY HYSPAN, AN EJMA REGISTERED COMPANY.
2. ALL WELDING PER THE ASME BOILER & PRESSURE VESSEL CODE SECTION IX.
3. ONE (1) YEAR LIMITED WARRANTY.
4. ALIGNMENT GUIDES, ANCHORS, AND SUPPORTS REQUIRED FOR CORRECT OPERATION & WARRANTY.

**1509 HYFLEX SINGLE-PLY
WELD END, 50 PSIG**



Hyspan Precision Products, Inc. Tel 619-421-1355
 1685 Brandywine Avenue Fax 619-421-1702
 Chula Vista, CA 91911 websales@hyspan.com