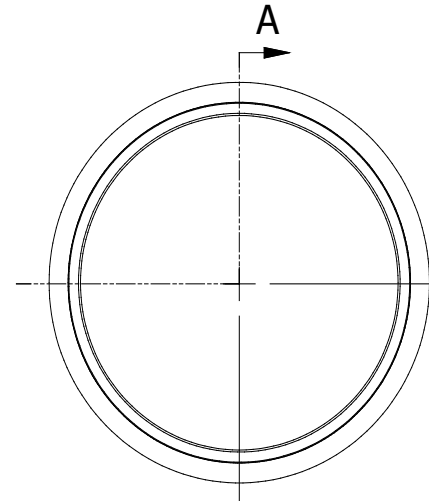
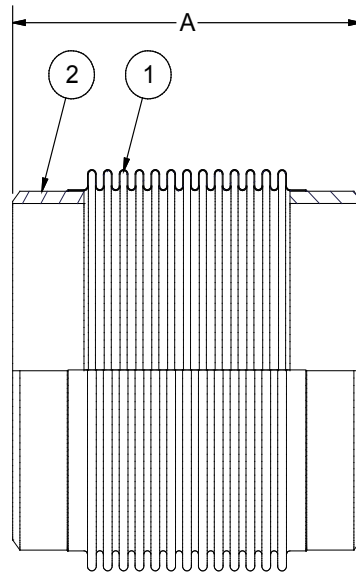


BUTTWELD ENDS  
 ASME B16.25  
 1/16" LAND, 37.5° BEVEL




SEE SHEET 3 FOR NOTES

SUBMITTED FOR APPROVAL	DESIGN DATA	LIST OF MATERIAL			
	MEDIA:				
OPERATING PRESSURE:	PSIG				
DESIGN PRESSURE:	300 PSIG				
DESIGN TEMPERATURE:	500° F				
(MAX TEST PRESSURE 1.5 X DESIGN)					
		2	2	PIPE, SCHEDULE STANDARD	A53 GRADE B
		1	1	BELLOWS	A240-304
		ITEM	QTY	DESCRIPTION	MATERIAL

**1509 HYFLEX SINGLE-PLY  
 WELD END, 300 PSIG**



Hyspan Precision Products, Inc. Tel 619-421-1355  
 1685 Brandywine Avenue Fax 619-421-1702  
 Chula Vista, CA 91911 websales@hyspan.com

ITEM	PART NUMBER	NOMINAL SIZE (IN)	QUANTITY	AXIAL COMPRESSION (IN)	OVERALL LENGTH A (IN)	WEIGHT (LB)	TAG	
	1509-340-1.0	3		1.0	8.0	5		
	1509-340-1.5	3		1.5	9.0	5		
	1509-340-2.0	3		2.0	10.0	5		
	1509-348-1.0	4		1.0	8.0	7		
	1509-348-1.5	4		1.5	9.0	7		
	1509-348-2.0	4		2.0	10.0	7		
	1509-355-1.0	5		1.0	8.0	10		
	1509-355-1.5	5		1.5	9.0	10		
	1509-355-2.0	5		2.0	10.0	10		
	1509-360-1.0	6		1.0	8.0	12		
	1509-360-1.5	6		1.5	9.0	12		
	1509-360-2.0	6		2.0	10.0	12		
	1509-367-1.5	8		1.5	11.0	18		
	1509-367-2.0	8		2.0	13.0	18		
	1509-367-2.5	8		2.5	15.0	18		
	1509-374-1.5	10		1.5	11.0	25		
	1509-374-2.0	10		2.0	13.0	25		
	1509-374-2.5	10		2.5	15.0	25		
	1509-380-2.0	12		2.0	13.0	29		
	1509-380-2.5	12		2.5	14.5	29		
	1509-380-3.0	12		3.0	16.0	29		
	1509-381-2.0	14		2.0	13.0	33		
	1509-381-2.5	14		2.5	14.5	33		
	1509-381-3.0	14		3.0	16.0	33		
		Nominal Sizes 16", 18", 20", and 24" on Sheet 3 of 3						
<b>1509 HYFLEX SINGLE-PLY WELD END, 300 PSIG</b>					 Hyspan Precision Products, Inc. Tel 619-421-1355 1685 Brandywine Avenue Fax 619-421-1702 Chula Vista, CA 91911 websales@hyspan.com			
COPYRIGHT© 2019 HYPAN PRECISION PRODUCTS, INC.						SHEET 2 OF 3		

ITEM	PART NUMBER	NOMINAL SIZE (IN)	QUANTITY	AXIAL COMPRESSION (IN)	OVERALL LENGTH A (IN)	WEIGHT (LB)	TAG
	1509-382-2.0	16		2.0	13.0	37	
	1509-382-2.5	16		2.5	14.5	37	
	1509-382-3.0	16		3.0	16.0	37	
	1509-383-2.0	18		2.0	13.0	42	
	1509-383-2.5	18		2.5	14.5	42	
	1509-383-3.0	18		3.0	16.0	42	
	1509-384-2.0	20		2.0	13.0	46	
	1509-384-2.5	20		2.5	14.5	46	
	1509-384-3.0	20		3.0	16.0	46	
	1509-386-2.0	24		2.0	13.0	56	
	1509-386-2.5	24		2.5	14.5	56	
	1509-386-3.0	24		3.0	16.0	56	

**NOTES:**

1. MANUFACTURED BY HYSpan, AN EJMA REGISTERED COMPANY.
2. ALL WELDING PER THE ASME BOILER & PRESSURE VESSEL CODE SECTION IX.
3. ONE (1) YEAR LIMITED WARRANTY.
4. ALIGNMENT GUIDES, ANCHORS, AND SUPPORTS REQUIRED FOR CORRECT OPERATION & WARRANTY.

**1509 HYFLEX SINGLE-PLY  
WELD END, 300 PSIG**



Hyspan Precision Products, Inc. Tel 619-421-1355  
1685 Brandywine Avenue Fax 619-421-1702  
Chula Vista, CA 91911 websales@hyspan.com