

Externally Pressurized Expansion Joints (FX)

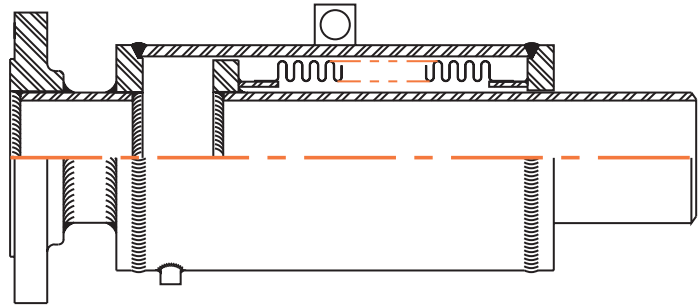
2" & 2 1/2"
Nominal Diameter

UNIT TYPE

XSO = SINGLE W/O ANCHOR
XSA = SINGLE W/ ANCHOR
XDA = DUAL W/ ANCHOR

ENDS

FR = FIXED RFSO FLANGE
WS = WELD END STD. WT. PIPE
WH = WELD END SCH. E.H./80s PIPE



XSO (FR-WS)

PART NUMBER EXAMPLE:

NOM SIZE	UNIT TYPE	DESIGN PRESSURE	AXIAL COMPRESSION	END FITTINGS (See Page 66)	OVERALL LENGTH	SPECIAL MATERIALS	
						BELLEWS	END
						MAT'L	MAT'L
2	XSO	150	6.0	FR - WS	31"	B1	

This part number describes the unit pictured above.

2"	EFFECT. AREA (in ²) 11.94	AXIAL COMPRESSION		AXIAL SPRING RATE (lb./in.)	LENGTHS ±1/8" ±1/4" ABOVE 3 FT.		ESTIMATED WEIGHT (lbs.)						OUTER SHELL OD
		XS (inches)	XD (inches)		XS (inches)	XD (inches)	WSxWS		FRxFR		WSxFR		
							XS	XD	XS	XD	XS	XD	
150 psig		4.0	8.0	300	24.25	38.50	42	73	53	84	47	75	5.56
		6.0	12.0	200	31.00	52.00	55	99	66	110	61	101	5.56
		8.0	16.0	150	37.75	65.50	66	120	76	131	71	122	5.56

300 psig	EFFECT. AREA (in ²) 12.03	AXIAL COMPRESSION		AXIAL SPRING RATE (lb./in.)	LENGTHS ±1/8" ±1/4" ABOVE 3 FT.		ESTIMATED WEIGHT (lbs.)						OUTER SHELL OD
		XS (inches)	XD (inches)		XS (inches)	XD (inches)	WSxWS		FRxFR		WSxFR		
							XS	XD	XS	XD	XS	XD	
		4.0	8.0	530	27.25	44.50	50	89	65	104	57	93	5.56
		6.0	12.0	360	35.25	60.50	67	123	82	138	75	127	5.56
		8.0	16.0	270	43.25	76.50	81	152	97	167	89	156	5.56

2 1/2"	EFFECT. AREA (in ²) 11.94	AXIAL COMPRESSION		AXIAL SPRING RATE (lb./in.)	LENGTHS ±1/8" ±1/4" ABOVE 3 FT.		ESTIMATED WEIGHT (lbs.)						OUTER SHELL OD
		XS (inches)	XD (inches)		XS (inches)	XD (inches)	WSxWS		FRxFR		WSxFR		
							XS	XD	XS	XD	XS	XD	
150 psig		4.0	8.0	300	24.50	39.00	44	76	59	91	51	80	5.56
		6.0	12.0	200	31.25	52.50	58	105	73	120	66	109	5.56
		8.0	16.0	150	38.00	66.00	69	127	85	143	77	132	5.56

300 psig	EFFECT. AREA (in ²) 12.01	AXIAL COMPRESSION		AXIAL SPRING RATE (lb./in.)	LENGTHS ±1/8" ±1/4" ABOVE 3 FT.		ESTIMATED WEIGHT (lbs.)						OUTER SHELL OD
		XS (inches)	XD (inches)		XS (inches)	XD (inches)	WSxWS		FRxFR		WSxFR		
							XS	XD	XS	XD	XS	XD	
		4.0	8.0	450	27.25	44.50	50	88	71	110	60	95	5.56
		6.0	12.0	300	35.25	60.50	67	122	89	144	78	130	5.56
		8.0	16.0	220	43.25	76.50	81	151	103	173	92	158	5.56

Standard materials of construction

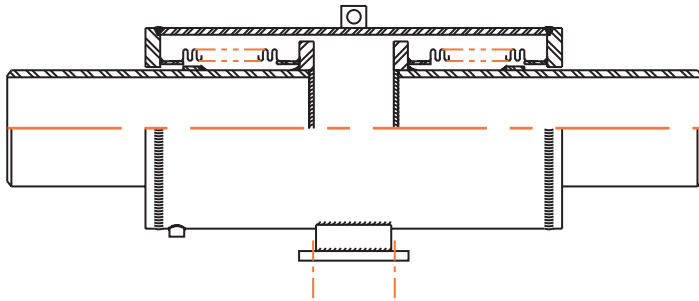
Bellows: A240 T321.
Line Pipe: Standard Wt. (A53-B/A106-B).
Outer Shell: A53-B/A106-B/A516-70.
Rings: A-36/A516-70.
Flanges: 150 psig Designs; 150# ANSI B16.5 RFSO (A105)
300 psig Designs; 300# ANSI B16.5 RFSO (A105).

- Cycle Life = 2,000 minimum (EJMA).
- For anchor details, please see anchor table (Page 74).
- Maximum Test Pressure is 1.5 X Rated Pressure.
- Pressure Rating is based on a design temperature of -20° F to 650° F. If flanged ends are specified, the maximum temperature rating for 150 psig design is 500° F.
- Maximum Axial Extension is 15% of Axial Compression Value shown above.
- Maximum installation misalignment is ± 1/4" axial and ± 1/16" lateral.



Externally Pressurized Expansion Joints (FX)

3" & 4"
Nominal Diameter



XDA (WS-WS)

UNIT TYPE

XSO = SINGLE W/O ANCHOR
XSA = SINGLE W/ ANCHOR
XDA = DUAL W/ ANCHOR

ENDS

FR = FIXED RFSO FLANGE
WS = WELD END STD. WT. PIPE
WH = WELD END SCH. E.H./80s PIPE

PART NUMBER EXAMPLE:

NOM SIZE	UNIT TYPE	DESIGN PRESSURE	AXIAL COMPRESSION	END FITTINGS (See Page 66)	OVERALL LENGTH	SPECIAL MATERIALS	
						BELLOWS	END
						MAT'L	MAT'L
3	- XDA	- 150	- 16.0	- WS - WS	- 61 1/2"		

This part number describes the unit pictured above.

3"	EFFECT. AREA (in ²)	AXIAL COMPRESSION		AXIAL SPRING RATE (lb./in.)	LENGTHS ±1/8" ±1/4" ABOVE 3 FT.		ESTIMATED WEIGHT (lbs.)						OUTER SHELL OD
		XS (inches)	XD (inches)		XS (inches)	XD (inches)	WSxWS		FRxFR		WSxFR		
							XS	XD	XS	XD	XS	XD	
150 psig	20.38	4.0	8.0	460	23.25	36.50	59	102	77	119	68	105	6.63
		6.0	12.0	300	29.50	49.00	79	141	97	159	88	145	6.63
		8.0	16.0	230	35.75	61.50	94	170	111	187	102	174	6.63

300 psig	EFFECT. AREA (in ²)	AXIAL COMPRESSION		AXIAL SPRING RATE (lb./in.)	LENGTHS ±1/8" ±1/4" ABOVE 3 FT.		ESTIMATED WEIGHT (lbs.)						OUTER SHELL OD
		XS (inches)	XD (inches)		XS (inches)	XD (inches)	WSxWS		FRxFR		WSxFR		
							XS	XD	XS	XD	XS	XD	
300 psig	20.57	4.0	8.0	950	27.50	45.00	84	151	113	180	98	161	6.63
		6.0	12.0	620	35.50	61.00	116	216	145	244	131	225	6.63
		8.0	16.0	480	43.50	77.00	143	268	171	297	157	278	6.63

4"	EFFECT. AREA (in ²)	AXIAL COMPRESSION		AXIAL SPRING RATE (lb./in.)	LENGTHS ±1/8" ±1/4" ABOVE 3 FT.		ESTIMATED WEIGHT (lbs.)						OUTER SHELL OD
		XS (inches)	XD (inches)		XS (inches)	XD (inches)	WSxWS		FRxFR		WSxFR		
							XS	XD	XS	XD	XS	XD	
150 psig	30.39	4.0	8.0	490	24.25	38.50	93	155	121	183	107	162	8.63
		6.0	12.0	340	30.75	51.50	120	208	148	236	134	216	8.63
		8.0	16.0	240	37.25	64.50	143	255	172	284	157	263	8.63

300 psig	EFFECT. AREA (in ²)	AXIAL COMPRESSION		AXIAL SPRING RATE (lb./in.)	LENGTHS ±1/8" ±1/4" ABOVE 3 FT.		ESTIMATED WEIGHT (lbs.)						OUTER SHELL OD
		XS (inches)	XD (inches)		XS (inches)	XD (inches)	WSxWS		FRxFR		WSxFR		
							XS	XD	XS	XD	XS	XD	
300 psig	30.54	4.0	8.0	1020	28.25	46.50	129	227	177	275	153	244	8.63
		6.0	12.0	680	36.25	62.50	175	318	223	366	199	335	8.63
		8.0	16.0	510	44.75	79.50	215	399	263	447	239	416	8.63

Standard materials of construction

Bellows: A240 T321.
Line Pipe: Standard Wt. (A53-B/A106-B).
Outer Shell: A53-B/A106-B/A516-70.
Rings: A-36/A516-70.
Flanges: 150 psig Designs; 150# ANSI B16.5 RFSO (A105)
300 psig Designs; 300# ANSI B16.5 RFSO (A105).

- Cycle Life = 2,000 minimum (EJMA).
- For anchor details, please see anchor table (Page 74).
- Maximum Test Pressure is 1.5 X Rated Pressure.
- Pressure Rating is based on a design temperature of -20° F to 650° F. If flanged ends are specified, the maximum temperature rating for 150 psig design is 500° F.
- Maximum Axial Extension is 15% of Axial Compression Value shown above.
- Maximum installation misalignment is ± 1/4" axial and ± 1/16" lateral.



Externally Pressurized Expansion Joints (FX)

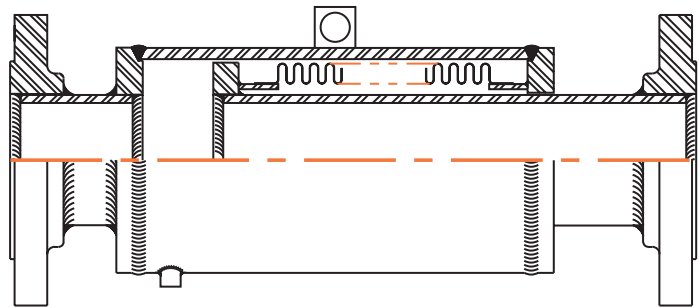
5" & 6"
Nominal Diameter

UNIT TYPE

XSO = SINGLE W/O ANCHOR
XSA = SINGLE W/ ANCHOR
XDA = DUAL W/ ANCHOR

ENDS

FR = FIXED RFSO FLANGE
WS = WELD END STD. WT. PIPE
WH = WELD END SCH. E.H./80s PIPE



XSO (FR-FR)



PART NUMBER EXAMPLE:

NOM SIZE	UNIT TYPE	DESIGN PRESSURE	AXIAL COMPRESSION	END FITTINGS (See Page 66)	OVERALL LENGTH	SPECIAL MATERIALS	
						BELLOWS	END
						MAT'L	MAT'L
6	XSO	150	6.0	FR - FR	31 1/2"		

This part number describes the unit pictured above.

5"	AXIAL COMPRESSION	AXIAL SPRING RATE (lb./in.)	LENGTHS ±1/8" ±1/4" ABOVE 3 FT.		ESTIMATED WEIGHT (lbs.)						OUTER SHELL OD			
			XS (inches)	XD (inches)	WSxWS		FRxFR		WSxFR					
					XS	XD	XS	XD	XS	XD				
150 psig	EFFECT. AREA (in ²)	41.74	4.0	8.0	880	24.25	38.50	155	264	187	296	171	271	10.75
			6.0	12.0	590	30.75	51.50	204	361	236	393	220	369	10.75
			8.0	16.0	440	37.50	65.00	245	443	277	475	261	451	10.75

300 psig	EFFECT. AREA (in ²)	41.83	4.0	8.0	1200	29.25	48.50	188	330	249	391	218	352	10.75
			6.0	12.0	800	37.75	65.50	253	460	314	521	283	482	10.75
			8.0	16.0	600	46.25	82.50	310	574	371	634	340	595	10.75

6"	AXIAL COMPRESSION	AXIAL SPRING RATE (lb./in.)	LENGTHS ±1/8" ±1/4" ABOVE 3 FT.		ESTIMATED WEIGHT (lbs.)						OUTER SHELL OD			
			XS (inches)	XD (inches)	WSxWS		FRxFR		WSxFR					
					XS	XD	XS	XD	XS	XD				
150 psig	EFFECT. AREA (in ²)	70.67	4.0	8.0	1260	24.75	39.50	228	390	269	430	248	394	12.75
			6.0	12.0	840	31.50	53.00	299	531	340	572	319	536	12.75
			8.0	16.0	630	37.75	65.50	359	651	400	691	379	655	12.75

300 psig	EFFECT. AREA (in ²)	70.90	4.0	8.0	2200	30.25	50.50	307	547	392	631	349	574	12.75
			6.0	12.0	1470	38.50	67.00	415	763	500	847	457	789	12.75
			8.0	16.0	1100	46.75	83.50	512	958	597	1043	555	985	12.75

Standard materials of construction

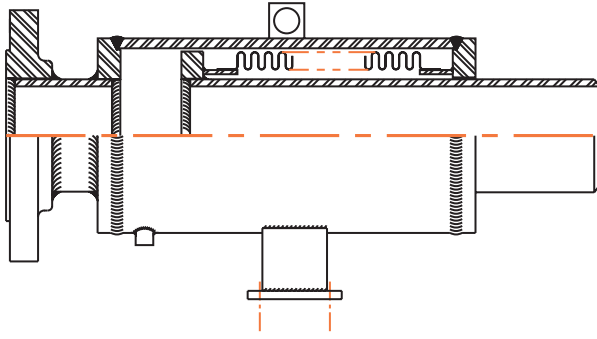
Bellows: A240 T321.
Line Pipe: Standard Wt. (A53-B/A106-B).
Outer Shell: A53-B/A106-B/A516-70.
Rings: A-36/A516-70.
Flanges: 150 psig Designs; 150# ANSI B16.5 RFSO (A105)
300 psig Designs; 300# ANSI B16.5 RFSO (A105).

- Cycle Life = 2,000 minimum (EJMA).
- For anchor details, please see anchor table (Page 74).
- Maximum Test Pressure is 1.5 X Rated Pressure.
- Pressure Rating is based on a design temperature of -20° F to 650° F. If flanged ends are specified, the maximum temperature rating for 150 psig design is 500° F.
- Maximum Axial Extension is 15% of Axial Compression Value shown above.
- Maximum installation misalignment is ± 1/4" axial and ± 1/16" lateral.



Externally Pressurized Expansion Joints (FX)

8" & 10"
Nominal Diameter



XSA (FR-WS)

UNIT TYPE

- XSO = SINGLE W/O ANCHOR
- XSA = SINGLE W/ ANCHOR
- XDA = DUAL W/ ANCHOR

ENDS

- FR = FIXED RFSO FLANGE
- WS = WELD END STD. WT. PIPE
- WH = WELD END SCH. E.H./80s PIPE

PART NUMBER EXAMPLE:

NOM SIZE	UNIT TYPE	DESIGN PRESSURE	AXIAL COMPRESSION	END FITTINGS (See Page 66)	OVERALL LENGTH	SPECIAL MATERIALS	
						BELLOWS	END
						MAT'L	MAT'L
8	- XSA	- 150	- 8.0	- FR - WS	- 41"		

This part number describes the unit pictured above.

8"	AXIAL COMPRESSION	AXIAL SPRING RATE (lb./in.)	LENGTHS ±1/8" ±1/4" ABOVE 3 FT.		ESTIMATED WEIGHT (lbs.)						OUTER SHELL OD		
			XS (inches)	XD (inches)	WSxWS		FRxFR		WSxFR				
					XS	XD	XS	XD	XS	XD			
150 psig	EFFECT. AREA (in ²) 106.45	1400	4.0	8.0	27.25	42.50	301	526	366	590	333	536	14.00
			6.0	12.0	33.75	55.50	399	721	464	785	431	731	14.00
			8.0	16.0	41.00	70.00	487	898	552	962	519	908	14.00

300 psig	EFFECT. AREA (in ²) 106.74	2450	4.0	8.0	29.50	47.00	412	748	539	873	475	788	14.00
			6.0	12.0	37.00	62.00	565	1053	691	1179	627	1094	14.00
			8.0	16.0	45.00	78.00	707	1339	834	1464	770	1379	14.00

10"	AXIAL COMPRESSION	AXIAL SPRING RATE (lb./in.)	LENGTHS ±1/8" ±1/4" ABOVE 3 FT.		ESTIMATED WEIGHT (lbs.)						OUTER SHELL OD		
			XS (inches)	XD (inches)	WSxWS		FRxFR		WSxFR				
					XS	XD	XS	XD	XS	XD			
150 psig	EFFECT. AREA (in ²) 148.52	2860	4.0	8.0	26.00	40.00	468	846	561	938	514	864	16.00
			6.0	12.0	33.00	54.00	641	1190	734	1282	686	1209	16.00
			8.0	16.0	39.50	66.75	798	1504	891	1596	844	1523	16.00

300 psig	EFFECT. AREA (in ²) 150.22	4000	4.0	8.0	30.25	48.50	624	1157	800	1332	711	1217	16.00
			6.0	12.0	38.75	65.50	871	1652	1048	1827	959	1712	16.00
			8.0	16.0	46.75	81.50	1104	2117	1281	2293	1192	2178	16.00

Standard materials of construction

- Bellows: A240 T321.
- Line Pipe: Standard Wt. (A53-B/A106-B).
- Outer Shell: A53-B/A106-B/A516-70.
- Rings: A-36/A516-70.
- Flanges: 150 psig Designs; 150# ANSI B16.5 RFSO (A105)
- 300 psig Designs; 300# ANSI B16.5 RFSO (A105).

- Cycle Life = 2,000 minimum (EJMA).
- For anchor details, please see anchor table (Page 74).
- Maximum Test Pressure is 1.5 X Rated Pressure.
- Pressure Rating is based on a design temperature of -20° F to 650° F.
- If flanged ends are specified, the maximum temperature rating for 150 psig design is 500° F.
- Maximum Axial Extension is 15% of Axial Compression Value shown above.
- Maximum installation misalignment is ± 1/4" axial and ± 1/16" lateral.



Externally Pressurized Expansion Joints (FX)

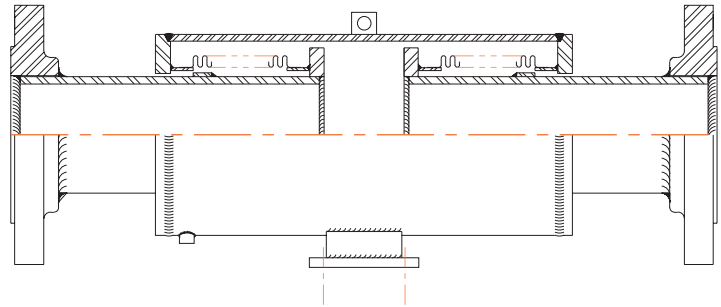
12" & 14"
Nominal Diameter

UNIT TYPE

XSO = SINGLE W/O ANCHOR
XSA = SINGLE W/ ANCHOR
XDA = DUAL W/ ANCHOR

ENDS

FR = FIXED RFSO FLANGE
WS = WELD END STD. WT. PIPE
WH = WELD END SCH. E.H./80s PIPE



XDA (FR-FR)



PART NUMBER EXAMPLE:

NOM SIZE	UNIT TYPE	DESIGN PRESSURE	AXIAL COMPRESSION	END FITTINGS (See Page 66)	OVERALL LENGTH	SPECIAL MATERIALS	
						BELLOWS	END
						MAT'L	MAT'L
12	XDA	150	12.0	FR - FR	52 1/2"	B2	E2

This part number describes the unit pictured above.

12"	AXIAL COMPRESSION	AXIAL SPRING RATE (lb./in.)	LENGTHS ±1/8" ±1/4" ABOVE 3 FT.		ESTIMATED WEIGHT (lbs.)						OUTER SHELL OD		
			XS (inches)	XD (inches)	WSxWS		FRxFR		WSxFR				
					XS	XD	XS	XD	XS	XD			
150 psig	EFFECT. AREA (in ²) 178.23	4.0	8.0	2900	26.00	40.00	536	972	676	1109	605	1010	18.00
		6.0	12.0	1860	32.25	52.50	745	1390	885	1527	814	1428	18.00
		8.0	16.0	1450	38.75	65.50	907	1713	1046	1851	976	1752	18.00
300 psig	EFFECT. AREA (in ²) 178.60	4.0	8.0	4380	29.50	47.00	739	1376	990	1626	863	1471	18.00
		6.0	12.0	2920	36.75	61.50	1028	1956	1280	2205	1153	2050	18.00
		8.0	16.0	2190	44.75	77.50	1307	2513	1558	2762	1432	2607	18.00

14"	AXIAL COMPRESSION	AXIAL SPRING RATE (lb./in.)	LENGTHS ±1/8" ±1/4" ABOVE 3 FT.		ESTIMATED WEIGHT (lbs.)						OUTER SHELL OD		
			XS (inches)	XD (inches)	WSxWS		FRxFR		WSxFR				
					XS	XD	XS	XD	XS	XD			
150 psig	EFFECT. AREA (in ²) 232.06	4.0	8.0	2570	26.50	41.00	672	1233	868	1427	769	1295	20.00
		6.0	12.0	1710	32.25	52.50	911	1710	1107	1904	1008	1772	20.00
		8.0	16.0	1280	39.00	66.00	1138	2165	1334	2359	1235	2227	20.00
300 psig	EFFECT. AREA (in ²) 231.64	4.0	8.0	4450	29.25	46.50	877	1643	1238	2002	1057	1788	20.00
		6.0	12.0	2970	37.00	62.00	1221	2331	1582	2690	1401	2476	20.00
		8.0	16.0	2220	44.50	77.00	1548	2984	1909	3343	1727	3129	20.00

Standard materials of construction

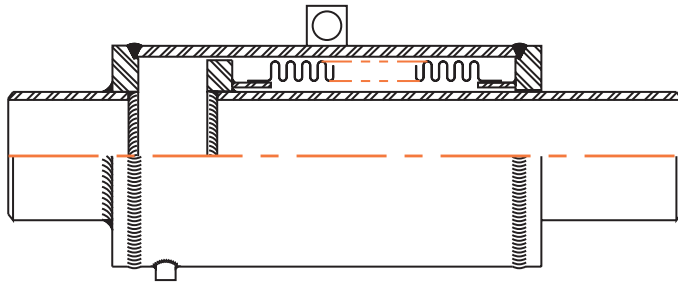
Bellows: A240 T321.
Line Pipe: Standard Wt. (A53-B/A106-B).
Outer Shell: A53-B/A106-B/A516-70.
Rings: A-36/A516-70.
Flanges: 150 psig Designs; 150# ANSI B16.5 RFSO (A105)
300 psig Designs; 300# ANSI B16.5 RFSO (A105).

- Cycle Life = 2,000 minimum (EJMA).
- For anchor details, please see anchor table (Page 74).
- Maximum Test Pressure is 1.5 X Rated Pressure.
- Pressure Rating is based on a design temperature of -20° F to 650° F. If flanged ends are specified, the maximum temperature rating for 150 psig design is 500° F.
- Maximum Axial Extension is 15% of Axial Compression Value shown above.
- Maximum installation misalignment is ± 1/4" axial and ± 1/16" lateral.



Externally Pressurized Expansion Joints (FX)

16" & 18"
Nominal Diameter



XSO (WS-WS)

UNIT TYPE

- XSO = SINGLE W/O ANCHOR
- XSA = SINGLE W/ ANCHOR
- XDA = DUAL W/ ANCHOR

ENDS

- FR = FIXED RFSO FLANGE
- WS = WELD END STD. WT. PIPE
- WH = WELD END SCH. E.H./80s PIPE

PART NUMBER EXAMPLE:

NOM SIZE	UNIT TYPE	DESIGN PRESSURE	AXIAL COMPRESSION	END FITTINGS (See Page 66)	OVERALL LENGTH	SPECIAL MATERIALS	
						BELLOWS	END
						MAT'L	MAT'L
18	- XSO	- 150	- 8.0	- WS - WS	- 41 1/2"		

This part number describes the unit pictured above.

16"	AXIAL COMPRESSION	AXIAL SPRING RATE (lb./in.)	LENGTHS ±1/8" ±1/4" ABOVE 3 FT.		ESTIMATED WEIGHT (lbs.)						OUTER SHELL OD		
			XS (inches)	XD (inches)	WSxWS		FRxFR		WSxFR				
					XS	XD	XS	XD	XS	XD			
150 psig	EFFECT. AREA (in ²) 289.20	2870	4.0	8.0	28.25	42.50	814	1492	1027	1703	920	1558	22.00
			6.0	12.0	35.00	56.00	1111	2086	1325	2298	1217	2153	22.00
			8.0	16.0	41.75	69.50	1391	2645	1604	2856	1496	2712	22.00
300 psig	EFFECT. AREA (in ²) 288.74	4990	4.0	8.0	31.75	49.50	1074	2011	1490	2425	1281	2179	22.00
			6.0	12.0	39.50	65.00	1497	2857	1912	3271	1703	3025	22.00
			8.0	16.0	47.00	80.00	1900	3664	2316	4078	2107	3832	22.00

18"	AXIAL COMPRESSION	AXIAL SPRING RATE (lb./in.)	LENGTHS ±1/8" ±1/4" ABOVE 3 FT.		ESTIMATED WEIGHT (lbs.)						OUTER SHELL OD		
			XS (inches)	XD (inches)	WSxWS		FRxFR		WSxFR				
					XS	XD	XS	XD	XS	XD			
150 psig	EFFECT. AREA (in ²) 355.75	3290	4.0	8.0	28.25	42.50	862	1571	1145	1852	1002	1660	24.00
			6.0	12.0	34.50	55.00	1163	2173	1446	2454	1303	2263	24.00
			8.0	16.0	41.50	69.00	1449	2746	1733	3027	1590	2836	24.00
300 psig	EFFECT. AREA (in ²) 359.05	7610	4.0	8.0	32.25	50.50	1540	2927	2087	3472	1812	3149	24.00
			6.0	12.0	40.25	66.50	2242	4331	2790	4876	2515	4553	24.00
			8.0	16.0	48.50	83.00	2799	5446	3347	5991	3072	5668	24.00

Standard materials of construction

- Bellows: A240 T321.
- Line Pipe: Standard Wt. (A53-B/A106-B).
- Outer Shell: A53-B/A106-B/A516-70.
- Rings: A-36/A516-70.
- Flanges: 150 psig Designs; 150# ANSI B16.5 RFSO (A105)
- 300 psig Designs; 300# ANSI B16.5 RFSO (A105).

- Cycle Life = 2,000 minimum (EJMA).
- For anchor details, please see anchor table (Page 74).
- Maximum Test Pressure is 1.5 X Rated Pressure.
- Pressure Rating is based on a design temperature of -20° F to 650° F.
- If flanged ends are specified, the maximum temperature rating for 150 psig design is 500° F.
- Maximum Axial Extension is 15% of Axial Compression Value shown above.
- Maximum installation misalignment is ± 1/4" axial and ± 1/16" lateral.



Externally Pressurized Expansion Joints (FX)

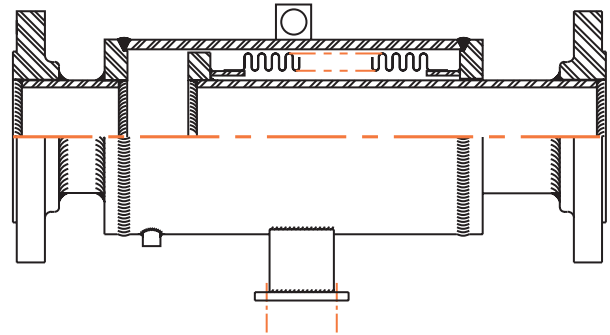
20" & 24"
Nominal Diameter

UNIT TYPE

XSO = SINGLE W/O ANCHOR
XSA = SINGLE W/ ANCHOR
XDA = DUAL W/ ANCHOR

ENDS

FR = FIXED RFSO FLANGE
WS = WELD END STD. WT. PIPE
WH = WELD END SCH. E.H./80s PIPE



XSA (FR-FR)



PART NUMBER EXAMPLE:

NOM SIZE	UNIT TYPE	DESIGN PRESSURE	AXIAL COMPRESSION	END FITTINGS (See Page 66)	OVERALL LENGTH	SPECIAL MATERIALS	
						BELLOWS	END
						MAT'L	MAT'L
24	XSA	150	6.0	FR - FR	37"		

This part number describes the unit pictured above.

20"	AXIAL COMPRESSION	AXIAL SPRING RATE (lb./in.)	LENGTHS ±1/8" ±1/4" ABOVE 3 FT.		ESTIMATED WEIGHT (lbs.)						OUTER SHELL OD		
			XS (inches)	XD (inches)	WSxWS		FRxFR		WSxFR				
					XS	XD	XS	XD	XS	XD			
150 psig	EFFECT. AREA (in ²) 425.75	4.0	8.0	3600	28.50	43.00	998	1828	1358	2186	1177	1951	26.00
	6.0	12.0	2400	34.75	55.50	1353	2538	1713	2895	1531	2661	26.00	
	8.0	16.0	1800	41.75	69.50	1692	3216	2052	3574	1871	3339	26.00	
300 psig	EFFECT. AREA (in ²) 430.05	4.0	8.0	8020	31.50	49.00	1821	3474	2511	4162	2165	3762	26.00
	6.0	12.0	5150	39.50	65.00	2666	5165	3356	5852	3010	5453	26.00	
	8.0	16.0	4010	46.75	79.50	3331	6494	4021	7181	3674	6782	26.00	

24"	AXIAL COMPRESSION	AXIAL SPRING RATE (lb./in.)	LENGTHS ±1/8" ±1/4" ABOVE 3 FT.		ESTIMATED WEIGHT (lbs.)						OUTER SHELL OD		
			XS (inches)	XD (inches)	WSxWS		FRxFR		WSxFR				
					XS	XD	XS	XD	XS	XD			
150 psig	EFFECT. AREA (in ²) 584.88	4.0	8.0	4160	30.00	46.00	1309	2451	1790	2928	1548	2623	30.00
	6.0	12.0	2770	37.00	60.00	1793	3418	2273	3895	2031	3590	30.00	
	8.0	16.0	2080	44.00	74.00	2252	4335	2732	4813	2490	4508	30.00	
300 psig	EFFECT. AREA (in ²) 589.65	4.0	8.0	9420	33.00	52.00	2444	4720	3486	5759	2963	5173	30.00
	6.0	12.0	6060	41.00	68.00	3597	7026	4639	8065	4116	7480	30.00	
	8.0	16.0	4710	49.25	84.50	4515	8862	5556	9900	5034	9315	30.00	

Standard materials of construction

Bellows: A240 T321.
Line Pipe: Standard Wt. (A53-B/A106-B).
Outer Shell: A53-B/A106-B/A516-70.
Rings: A-36/A516-70.
Flanges: 150 psig Designs; 150# ANSI B16.5 RFSO (A105)
300 psig Designs; 300# ANSI B16.5 RFSO (A105).

- Cycle Life = 2,000 minimum (EJMA).
- For anchor details, please see anchor table (Page 74).
- Maximum Test Pressure is 1.5 X Rated Pressure.
- Pressure Rating is based on a design temperature of -20° F to 650° F. If flanged ends are specified, the maximum temperature rating for 150 psig design is 500° F.
- Maximum Axial Extension is 15% of Axial Compression Value shown above.
- Maximum installation misalignment is ± 1/4" axial and ± 1/16" lateral.



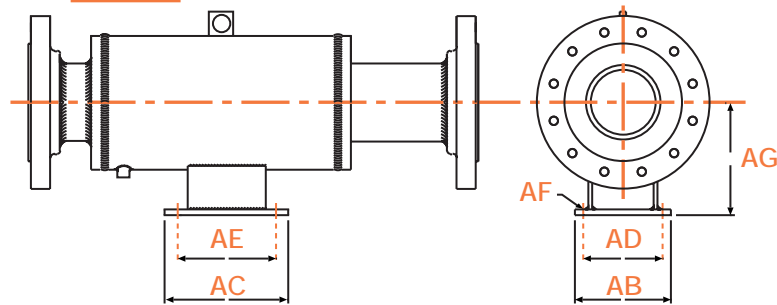


Externally Pressurized Expansion Joints (FX)

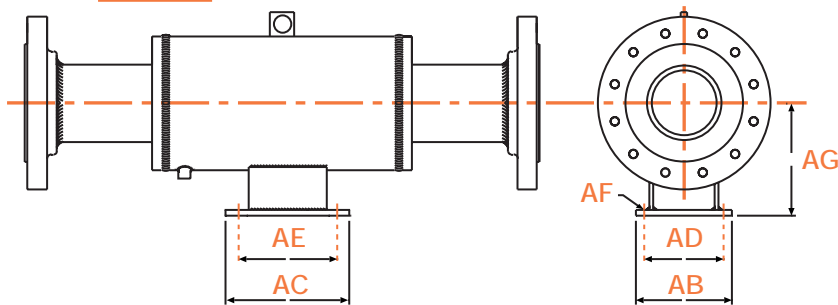
Anchor Specifications

NOMINAL Pipe Size	BASE DIMENSIONS		BOLT CENTER DIMENSIONS			AG
	Width AB	Length AC	Width AD	Length AE	Dia. AF	
2"	6"	8"	4 1/2"	6 1/2"	9/16"	4"
2 1/2"	6"	8"	4 1/2"	6 1/2"	9/16"	4"
3"	6"	8"	4 1/2"	6 1/2"	9/16"	4 3/4"
4"	6"	8"	4 1/2"	6 1/2"	9/16"	5 3/4"
5"	8"	10 1/2"	6"	8 1/2"	13/16"	6 3/4"
6"	8"	10 1/2"	6"	8 1/2"	13/16"	7 3/4"
8"	8"	10 1/2"	6"	8 1/2"	13/16"	9"
10"	10"	13 1/2"	8"	11 1/2"	13/16"	9 3/4"
12"	12"	16"	10"	14"	13/16"	11"
14"	14"	16"	11 1/2"	13 1/2"	1 1/16"	12 1/2"
16"	16"	16"	13 1/2"	13 1/2"	1 1/16"	14"
18"	18"	16"	15 1/2"	13 1/2"	1 1/16"	15"
20"	20"	16"	17 1/2"	13 1/2"	1 1/16"	16 1/4"
24"	24"	16"	21"	13"	1 5/16"	19 1/4"

XSA



XDA



NOTE: THESE ANCHOR BASES ARE DESIGNED AS INTERMEDIATE ANCHORS.
 IF MAIN ANCHOR DESIGN IS REQUIRED PLEASE CONSULT FACTORY.
 ALL DOUBLE EXTERNALLY PRESSURIZED EXPANSION JOINTS ARE FURNISHED WITH AN ANCHOR BASE AS STANDARD.
 SINGLE EXTERNALLY PRESSURIZED EXPANSION JOINTS CAN BE PROVIDED WITH ANCHOR BASES IF SPECIFIED.
 PLEASE SEE INDIVIDUAL DATA PAGES FOR DIAMETER, OUTER SHELL O.D. AND OVERALL LENGTH.

