

Series 5500 Bellows Pump Connectors

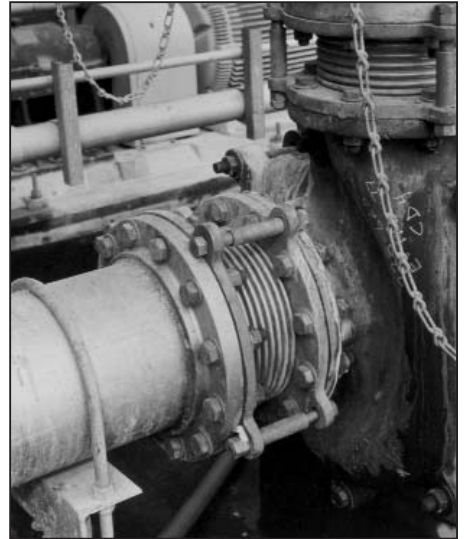
- Sizes 1-1/2" through 24"
- Design Conditions: full vacuum to 150 and 300 psig at 500°F
- Compact design with maximum flexibility and extended life
- Designed specifically to isolate and protect mechanical equipment

Series 5500 Bellows Pump Connectors are designed for installation adjacent to mechanical equipment to isolate vibration, absorb small pipe movements and to provide flexibility during installation. The bellows element is laminated (3 ply minimum) for maximum flexibility and fatigue resistance. Standard configurations include integral full thrust limit rods to react the full pressure thrust or compression for vacuum conditions.

This rugged product is designed for the most demanding industrial applications, or the maximum reliability for HVAC installations.

Standard configurations are available from inventory. Consult the factory for non-standard designs involving special materials or design conditions.

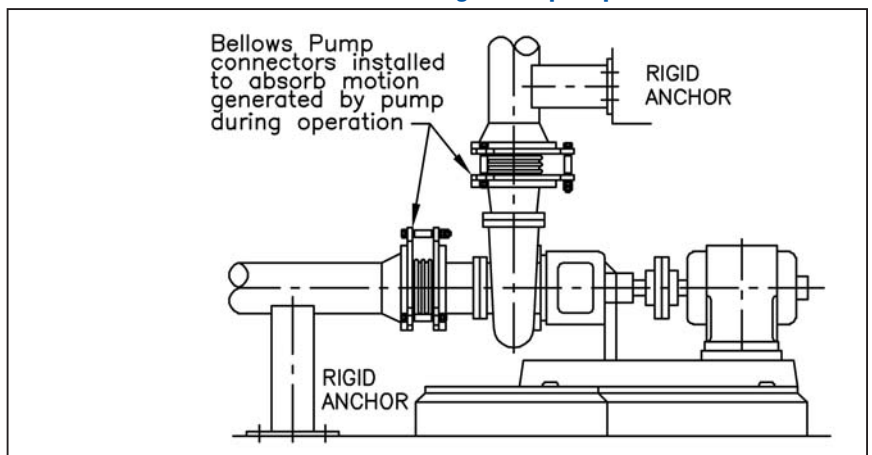
Type 5501R Bellows Pump Connectors installed on nitric acid pump.



Applications

Bellows pump connectors are designed to connect rigid piping to mechanical equipment that has thermal growth or mechanical movement. Although limit rods are an integral part of the design to prevent over extension or compression, these rods should be installed loose for full benefit. The rigid anchor shown in the illustration must be capable of reacting the pressure thrust and the spring force of the bellows.

Series 5500 Bellows Pump Connectors installed on the suction and discharge of a pump.



$$\text{Rigid Anchor Force (lbs)} = \left\{ \begin{array}{l} \text{Pressure Thrust*} \\ \text{Force (lbs.) Table 2} \end{array} \right\} + \left\{ \begin{array}{l} \text{Spring Rate (lbs./in.)} \\ \text{Column 4 Table 2 or 3} \end{array} \right\} \times \left\{ \begin{array}{l} \text{Axial Travel} \\ \text{(inches)} \end{array} \right\}$$

**Use maximum pressure – including test pressure.*